



2740 S. Cobb Industrial, Smyrna, GA

Opportunity

Available Space:	8,000 SF
Office Space:	1,283 SF
Total Bldg Size:	24,000 SF
Clear Height:	15'
Bay Size:	37'6 x 26'8
Dock Doors:	2 (8' x 10') DH, 1 Roll-up
Power:	200 amps, 110/208v

Location



10 Miles to
Airport



1 Miles to
I-75



8.3 Miles to
I-285

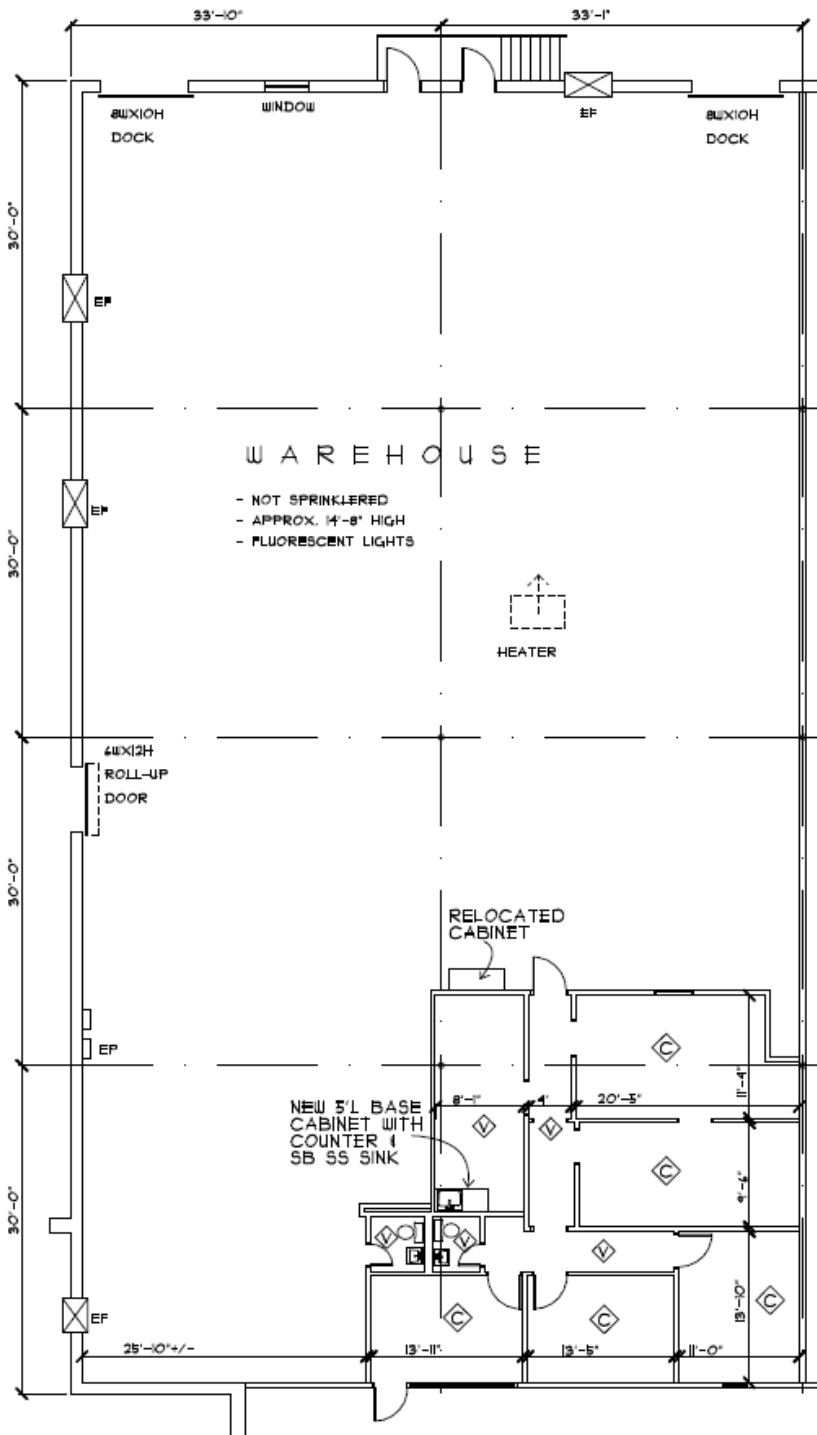
**For further
information**

Bruce Logue
Principal
+1 770 916 6150

avisonyoung.com

Industrial For Lease

2740 S. Cobb Industrial Blvd., Smyrna, GA



For further information



Bruce Logue
Principal
+1 770 916 6150
bruce.logue@avisonyoung.com

Owned by:

